

SANTA FE, NM



A TOWN WE LOVE

big life

MOUNTAIN LIFE AT ITS BEST

GONE FISHIN'

GUIDE MADDIE BRENNEMAN
ON CATCHING THE BIG ONES

MOUNTAIN BIKING MECCA
PARK CITY, UTAH

VETERANS GONE WILD!
HOW WILDERNESS
HELPS HEAL

MEET TUCO THE DOG—HE KNOWS
WHERE ALL THE BIG FISH ARE...
BUT HE'S NOT TALKING.

\$5.95US \$6.75CAN

73>



0 74470 29352 1

PLUS THE BEST

ART • FOOD • EVENTS • HOMES
AROUND THE WEST



a natural RETREAT

words by RYAN WATERFIELD

CASE STUDY: CARBONDALE, COLORADO

What does it take to build your dream home? Sometimes it's a matter of finding the perfect building site. Sometimes it's about marrying the design of the home to the setting you've found and the lifestyle you live. Sometimes it's a matter of finding a way to get exactly what you've

dreamed about with a budget grounded in reality. When all of that comes together, it's a very good thing.

A pastoral site in Carbondale, Colorado, with creek beds and old-growth trees and proximity to and views of Mt. Sopris, was the starting point for this

stunning Rowland+Broughton Architecture project completed in 2016. Inspired by Abbé Laugier's Primitive Hut, an architectural theory (1755) asserting that the ideal architectural forms stem from man's relationship to nature, the home is elegant yet simple and honors the natural landscape

ABOVE: This single-level ranch-style home is set on an expansive lot in Carbondale, Colorado, with mature trees and creek beds that dictated siting. The result? Harmony between structure and setting.



LEFT: The kitchen and dining area is a comfortable gathering place for the family. Oak flooring runs throughout the home connecting all the spaces in a consistent and subtle way. BELOW (top): The dining space opens to the outdoor sitting area to take advantage of the setting. BELOW (bottom): Custom cabinets in the kitchen are by Benchcraft Custom Woodwork; the countertop is Balentine by CaesarStone Raw Concrete, and Troy Liberty Rust Haven pendant lights hang above the island.



surrounding it.

The creek beds and trees offer a natural vernacular for the design of the home. They establish defined edges and spaces in an expansive landscape. The design of the home echoes that with thoughtful transitions within to foster the

family's routines and offers defined spaces for authentic moments in family life.

The floor plan is organized around an axis that connects the kitchen, dining, living, and sleeping areas in one path and reflects the ease and comfort the clients wanted

their home to offer. Significant consideration was given to creating seamless transitions from the interior spaces and the exterior ones. Lead architect on the project, Dana Ellis, says, "The homeowners have rituals like enjoying their coffee in the morning, and they wanted a great space to do that; the result was a sitting patio off of their bedroom. They also like to entertain and the patio off of the living area is a natural gathering place for the family and their guests."

About the design, Ellis says, "The family is from the Midwest and they are very grounded. The dining area was designed around the dining room table, a piece



ABOVE: The outdoor sitting area just off the dining room is protected but takes full advantage of the views. RIGHT (top): This sitting area is a nook in the larger kitchen area that invites intimate and relaxed conversations. Artwork is "Sitting Bull" by Nicholas Ward. RIGHT (bottom): The fireplace in the living area—made of stacked grey osage stone—was an essential part of the design, says architect Dana Ellis, because the family puts a high priority on the ritual of gathering and nothing encourages that more than a fire on a cold winter night. The artwork is "Buffalo Bill Cody" by Tomas Lasankys and most of the furnishings are from Cather's Home in Basalt, Colorado.



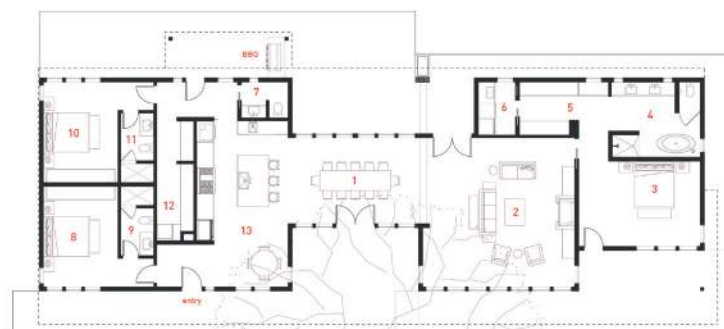


ABOVE: The master bedroom looks out towards the mountains and is simple and clean, blending natural elements with contemporary stylings. RIGHT: A guest room offers views, privacy, and peace. BELOW: The floor plan is open with a natural flow from space to space that reflects the way the family lives.

that had been in the family.”

At one point in the project, meeting the budget became a concern so, Ellis says, “We put the design on a diet. We went to the homeowners and considered square footage, and where we could conserve. The end result is a better design than the original. We had to be more intentional about dimensions and how the dimensions of a space reflected the way this family lives.”

The effect is stunning. It’s a home that encourages serenity and connections, everything you would want from a natural retreat. **31**



MAIN LEVEL

- 1 laundry
- 2 master closet
- 3 master bath
- 4 master bedroom
- 5 living room
- 6 dining room
- 7 kitchen
- 8 pantry
- 9 guest bath 1
- 10 guest suite 1
- 11 guest suite 2
- 12 guest bath 2
- 13 powder

LOCATION: Carbondale, Colorado
ARCHITECTURE: Rowland+Broughton
 Architecture / Urban Design / Interior Design
INTERIOR DESIGN: Rowland+Broughton
 Architecture / Urban Design / Interior Design
CONTRACTOR: Schlumberger Construction
SIZE: 2,700 sf • **COMPLETED:** August 2016