



rowland+broughton
architecture and urban design
www.rowlandbroughton.com

commercial



firm overview

Rowland+Broughton Architecture and Urban Design was established in 2003. Today R+B is a bustling design 'think tank' consisting of architects and interior designers with offices in Aspen and Denver, Colorado.

Having both an urban and small town office has given us the opportunity to work on a wide range of project types and sizes. Our diverse project portfolio includes commercial, hospitality, custom residential, interior design, institutional master planning and new town planning.

R+B has earned the reputation as a critically thinking architecture and urban design firm with extraordinary creative design solutions dedicated to getting projects built! Our highly skilled team ensures each project is completed to the highest standard. Complete collaboration between our offices is facilitated by a robust technological infrastructure, the R+B quality control manual, and continuous attention to communication culminating in over 100 built projects.

At R+B, it is our philosophy that architecture, landscape, planning, interior design and urban design are all interdependent. We

approach each project with an understanding of its regional and environmental impact as well as the social and personal needs it must meet. As a result we enjoy working with a considerable number of repeat clients. R+B aims to incorporate sustainability into every project. This is achieved by listening to our client's design goals, researching new green technologies, and then testing materials and applications before applying our findings to satisfy our clients.

We are leaders in our community with service on commissions and committees, and leaders in the design industry with awards from professional associations and publications. Our firm is comprised of architects and interior designers that are members of AIA, ASID, and NEWH. Additionally, many of our designers are LEED and NCIDQ certified. Our award-winning Colorado architecture firm has been honored with multiple awards and accolades!

Rowland+Broughton is passionate about design and loves sharing this enthusiasm with others! Our goal is to continue surprising and delighting our clients with excellent service and unexpected thinking.





COMMERCIAL DESIGN

R+B embrace the ideals set forth by their discerning clientele to create successful, viable commercial spaces. R+B is committed to delivering an artistic vision while holding fast to a budget and deadline. From creating well planned office spaces to adding penthouse condominiums, the whole team is adept at space planning and sustainable design. When it comes to creating new retail opportunities with storefront appeal, or welcoming the challenge of a historic redevelopment, R+B utilize the most innovative solutions by focusing on great design, communication, and collaboration.



design process

RESEARCH & ANALYSIS

The R+B process is a multi-faceted approach which includes architecture and interior design. At the start of every project, we seek out the facts about the projects that inform the opportunities and parameters. These facts include existing conditions, zoning and land use code, building code, budget and schedule. The owner's program is also critical to our analysis so that the end result meets the goals of the project. Concepts, schemes and designs are drawn into spaces in order to ensure that they are feasible, scalable and ultimately, functional. Meticulous measuring is performed for accuracy and design precision. Simultaneously, precedents and inspirations are studied to confirm that the design is aesthetically pleasing, sophisticated and timeless.

CONCEPTUAL DESIGN

Design concepts are derived from experience, context, history, program, and the environment. As designers, we are constantly inspired by our travels and the environment around us. We value the relationship with the client and our collaborative process enhances the design. Concepts are presented with detailed drawings that coordinate with the interior design concepts. Furniture, fabrics and finishes are chosen to complete the overall design.

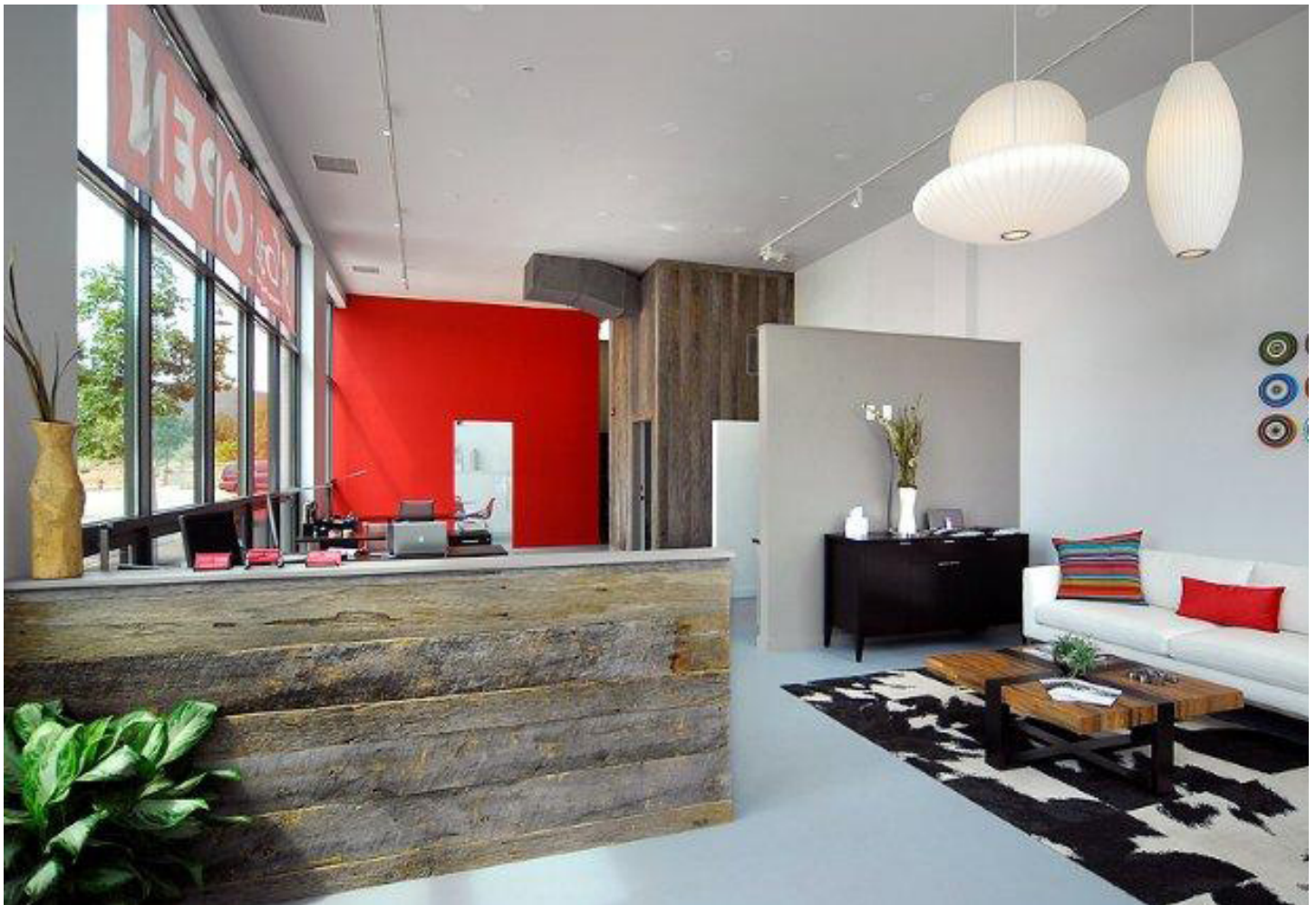
DESIGN PRESENTATION

We put ourselves in the shoes of our clients and present the design in an easy to understand manner. Hand sketches, physical and computer models, colorful photos and scaled drawings are all used to represent the

design concepts. We work between plans and interior elevations to ensure that the design is thoughtful and the appropriate scale.

IMPLEMENTATION

The success of all of our projects is a combination of detailed and easily understood drawings and specifications plus an active role in the construction process. We attend weekly site meetings well before the construction occurs so that questions can be answered. During construction, the weekly meetings continue so that the design is realized and executed to the highest standard. Above all, we have tenacity that begins with organization on the design front end and the final details at the end of the project. We love to build and see each of our projects through to the end!

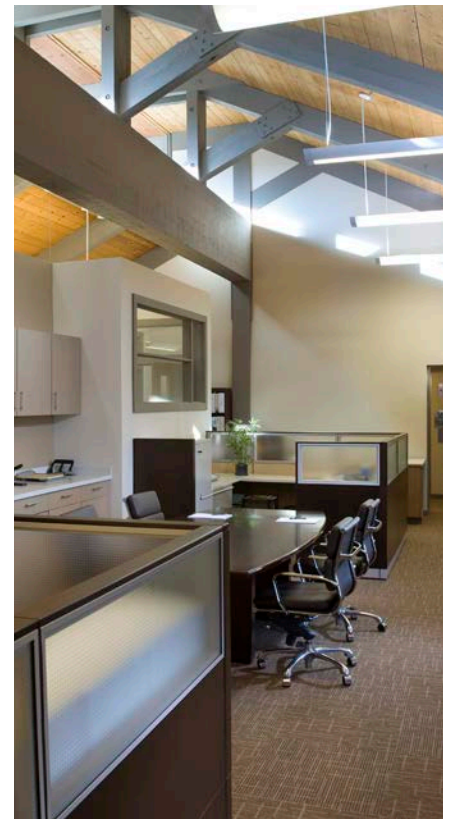
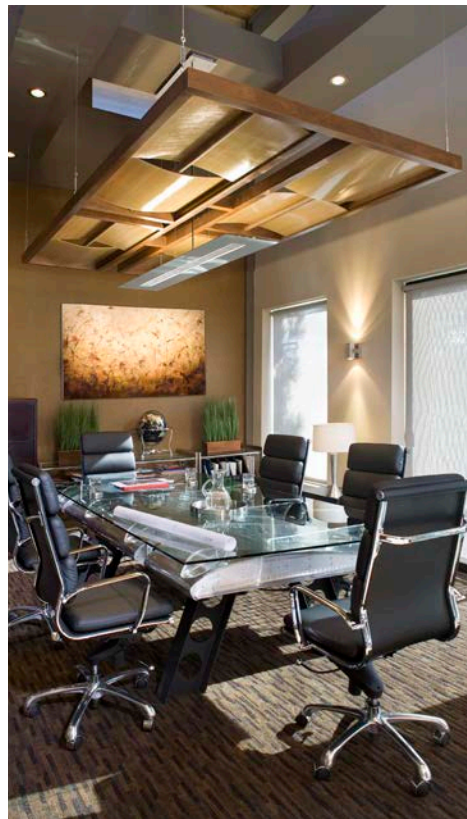


first meridian

denver, colorado

Size: 20,390 square feet

The 1970's era building in the Denver Tech Center featuring quirky circular stairs and split-face CMU blocks received a Rowland+Broughton update of their space plan as well as new interior and exterior finishes. Sandstone was added to the exterior columns along with contemporary lighting. The CMU blocks were painted and enhanced with an addition of untreated steel plates to create visual interest. The Lobby's new barrel vault ceiling leads visitors to the Reception Area, with a custom concrete and wood veneer desk featuring a three-dimensional resin element. The first floor has a contemporary café-style Break Room for employees to interact and entertain consultants. Newly enhanced spaces including offices, conference rooms, and training rooms have led to the continued success of First Meridian's business operations.

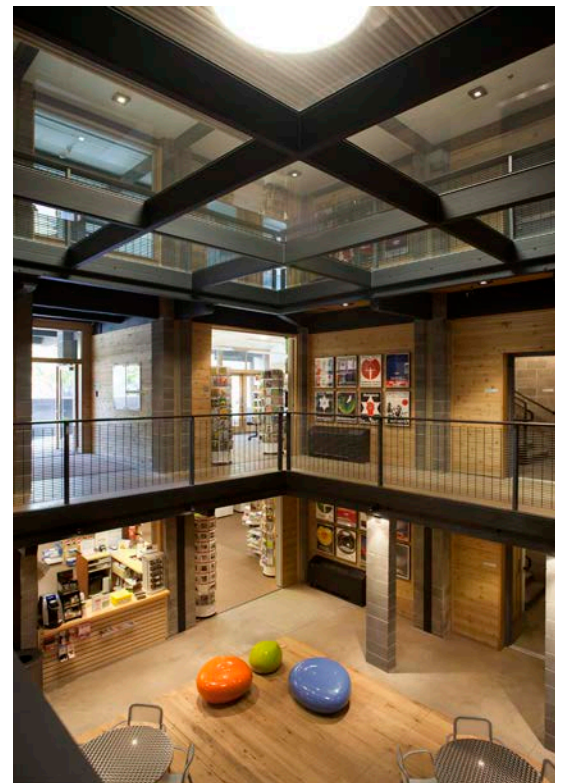


crandall building

aspen, colorado

Size: 19,348 square feet

Rowland+Broughton won the Aspen Historic Preservation Commission's 2012 Annual Award for outstanding commitment to historic preservation and a 2012 AIA Colorado West Honor Award for the Crandall Building renovation and restoration. R+B's leadership throughout the public process helped the project team obtain Aspen's first voluntary commercial post-war landmarked building from the City of Aspen. The project preserved the building's original unique form and fenestration while adding a rooftop addition that complemented the existing modern architectural vocabulary. While respecting the late artist and architect Thomas W. Benton, the remodel/addition of the Crandall Building brings this iconic 1970's building up to 21st century standards. Significant upgrades to the mechanical, electrical and plumbing systems maximized energy efficiency and sustainability. The most significant sustainability decision was not to demolish the original structure and redevelop entirely.

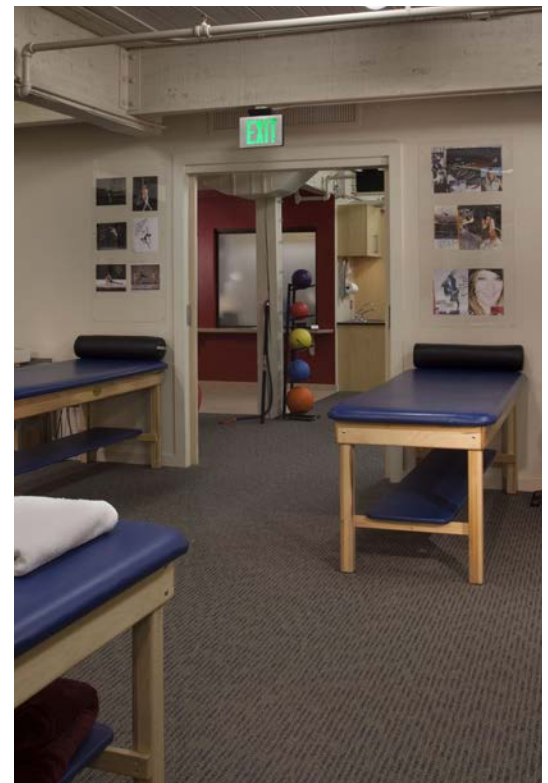


aspen sports medicine

aspen, colorado

Size: 3,218 square feet

Aspen Sports Medicine is an internationally recognized sports medicine clinic with a small mountain town feel. Rowland+Broughton diligently applied the architectural needs of the client by creating specific Treatment Rooms for massage, physical therapy and acupuncture. The renovation included installation of a new Elevator for handicap accessibility to the garden level office. In addition to new Bathrooms, shower/tubs were installed for therapeutic ice baths.

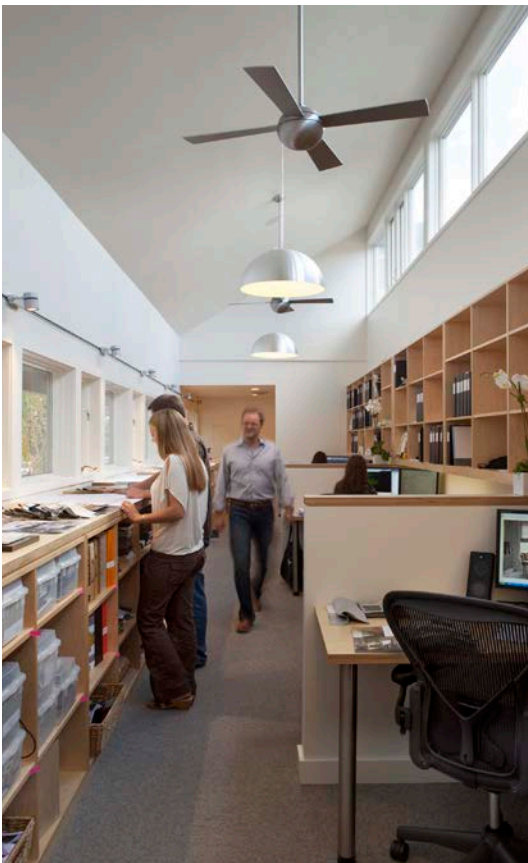


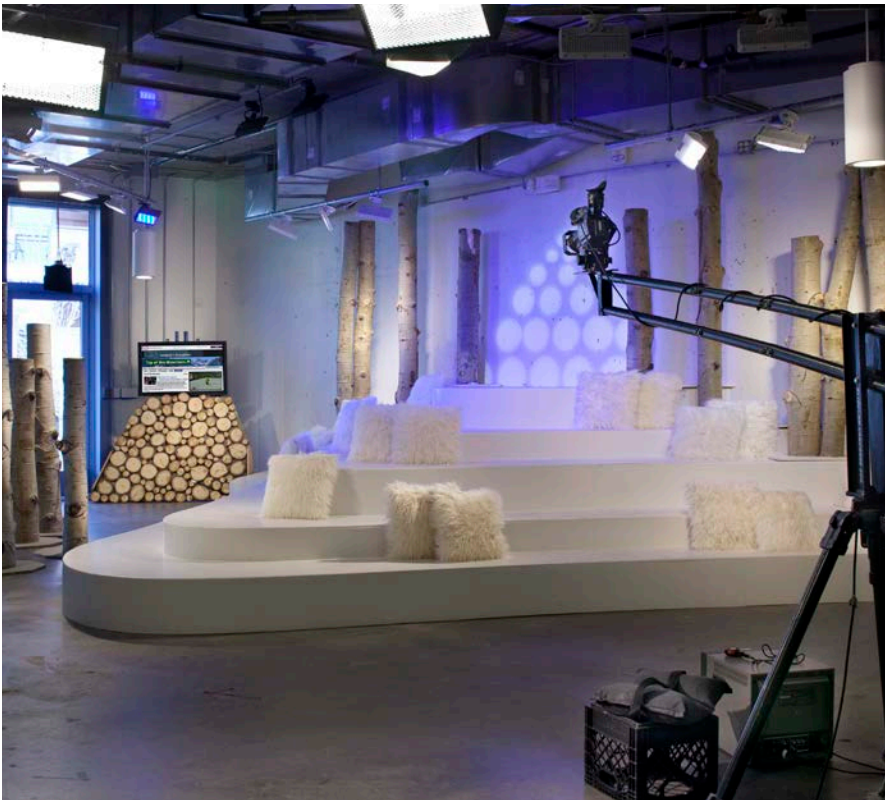
aspen office

aspen, colorado

Size: 3,130 square feet

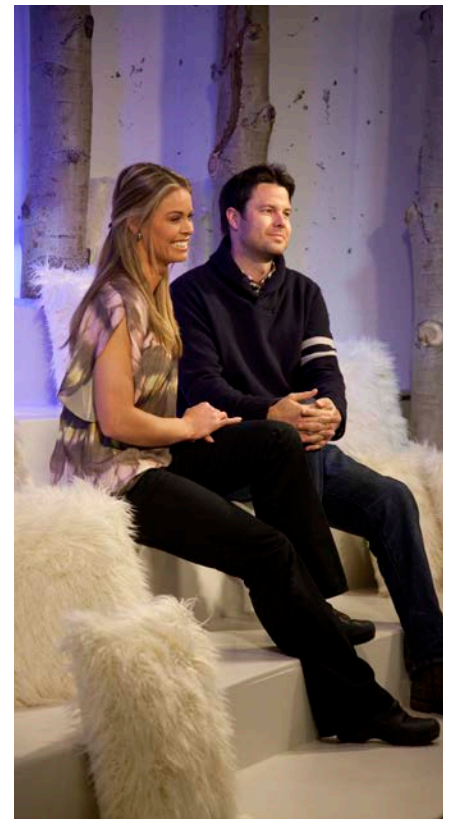
Located in The Mountain Forge Building a block from Main Street, Rowland+Broughton's office was formerly arranged as multiple enclosed rooms with limited natural light penetrating the space. As the firm has grown, a renovation to the second floor space allowed for an additional Conference Room, work spaces, and dedicated reception area. R+B rearranged both garden level and second floor spaces to create a studio environment by removing barriers and inviting in natural light. The open floor plan facilitates constant interaction between designers, clients, contractors and consultants, along with the opportunity for continuous dialogue, creating a truly collaborative environment.





Size: 1,900 square feet

Rowland+Broughton was selected by Plum TV to design their studio in Aspen, Colorado. The programming of the space focused on providing three distinctive and separate staging areas; a life-size topographical Platform Mountain, an instant forest featuring 32 Aspen Tree trunks, and a demonstration area. R+B's driving design concept was to bring the outdoors inside the studio while providing spaces that were both movable and flexible for filming and entourage hang-out.



dennis basso

aspen + vail, colorado

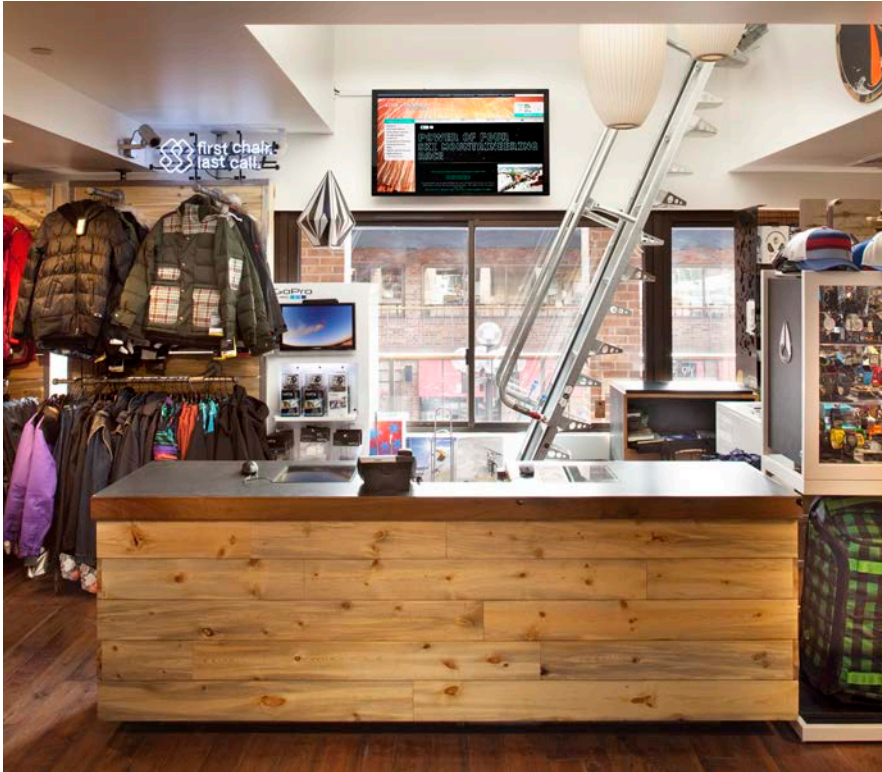
*Size: 915 square feet - Aspen, CO
1,020 square feet - Vail, CO*

Hailing from the streets of New York City, this luxury purveyor of high-end furs and clothing has made its home at The Little Nell in Aspen and the Four Seasons Hotel in Vail, Colorado. Rowland+Broughton was Architect of Record for both Dennis Basso stores, assisting New York architect John Lindell, with designs, drawings and permits.



d&e / four mountain sports / helly hansen

aspen, colorado



Size: 2,000 square feet

Aspen Skiing Company hired Rowland+Broughton to assist in upgrading the retail property to create a cohesive shopping experience. The remodel consisted of a branded Helly Hansen space on the lower level and new D&E / Four Mountain Sports retail spaces on the upper level. The design goal to keep each space aesthetically distinct from one another was successfully realized, enabling an intriguing yet seamless flow for the experienced shopper. R+B designed the Helly Hansen space to be cool and modern, whereas the D&E / Four Mountain Sports space is colorful and raw utilizing reclaimed beetle-kill wood. Lighting was added to brighten the space and highlight the stairway. Signage and branding were a large component of the process.



rowland+broughton
architecture and urban design

"In today's world 'service' in the true sense of the word too frequently is compromised at best. I wanted to take a moment to let you know how pleased I am with the build out and design of all aspects of the new Shane Aspen Real Estate office in Willits. Not only were your design choices exactly what I was after, but you delivered the premises on time! My sincere thanks for a job well done."

- Steven Shane, Shane Aspen Real Estate

"As always, the work is excellent and it was a pleasure to work with everyone at Rowland+Broughton. We enjoy the relationship with you and your firm."

- David Corbin, Aspen Skiing Company

"The work that R+B has done for me has proven invaluable in winning proposals at DIA. They are responsive, communicative and dynamic designers that get it done!"

- David Mosteller, Skyport Development

"The Crandall Building faced many obstacles as a design build restoration and redevelopment and Rowland+Broughton brought high energy, creativity, commitment and professionalism to every aspect of the project. They have contributed to great projects and achieved remarkable results with their development partners in the Aspen community and beyond and are recognized in all fields of their profession; and for good reason."

- Jane Hills, Austin Lawrence Partners

