

MAGICAL



MUSHROOMS

big life

MOUNTAIN LIFE AT ITS BEST

**THE POWER
OF ADVENTURE:**
EMBRACING THE
UNKNOWN +
WHY IT MATTERS

**SOURDOUGH
DREAMS:**
JACKSON HOLE'S
BEST BREAD

SHEJUMPS!
INSPIRING A
NEW GENERATION

*Busting down gender
barriers: Amanda Brauman
does it with style
and a smile.*



rise up

WE'VE GOT WORK TO DO.

\$5.95US \$6.75CAN



0 74470 29352 1

BIGLIFEMAG.COM



a natural
RETREAT
words by RYAN WATERFIELD
CASE STUDY: CARBONDALE, COLORADO

BIGLIFE BESTS

This Carbondale, Colorado home has been chosen by our readers as one of our BigLife's BESTS. Reprinted from Summer 2017. Enjoy!

What does it take to build your dream home? Sometimes it's a matter of finding the perfect building site. Sometimes it's about marrying the design of the home to the setting you've found and the lifestyle you live. Sometimes it's a matter of finding a way to get exactly what you've dreamed about with a budget grounded

in reality. When all of that comes together, it's a very good thing. A pastoral site in Carbondale, Colorado, with creek beds and old-growth trees and proximity to and views of Mt. Sopris, was the starting point for this stunning Rowland+Broughton Architecture project completed in 2016. Inspired by Abbé Laugier's Primitive Hut, an architectural

PHOTOGRAPHY: COURTESY ROWLAND+BROUGHTON ARCHITECTURE



LEFT: The kitchen and dining area is a comfortable gathering place for the family. Oak flooring runs throughout the home, connecting all the spaces in a consistent and subtle way. BELOW (top): The dining space opens to the outdoor sitting area to take advantage of the setting. BELOW (bottom): Custom cabinets in the kitchen are by Benchcraft Custom Woodwork; the countertop is Balentine by CaesarStone Raw Concrete, and Troy Liberty Rust Haven pendant lights hang above the island. OPPOSITE: This single-level ranch-style home is set on an expansive lot in Carbondale, Colorado, with mature trees and creek beds that dictated siting. The result? Harmony between structure and setting.

theory (1755) asserting that the ideal architectural forms stem from man's relationship to nature, the home is elegant yet simple and honors the natural landscape surrounding it.

The creek beds and trees offer a natural vernacular for the design of the home. They establish defined

edges and spaces in an expansive landscape. The design of the home echoes that with thoughtful transitions within to foster the family's routines and offers defined spaces for authentic moments in family life.

The floor plan is organized around an axis that connects

the kitchen, dining, living, and sleeping areas in one path and reflects the ease and comfort the clients wanted their home to offer. Significant consideration was given to creating seamless transitions from the interior spaces and the exterior ones. Lead architect on the project, Dana Ellis, says, “The homeowners have rituals like enjoying their coffee in the morning, and they wanted a great space to do that; the result was a sitting patio off of their bedroom. They also like to entertain and the patio off of the living area is a natural gathering place for the family and their guests.”

About the design, Ellis says, “The family is from the Midwest and they are very grounded. The dining area was designed around the dining room



ABOVE: The outdoor sitting area just off the dining room is protected but takes full advantage of the views. RIGHT (top): This sitting area is a nook in the larger kitchen area that invites intimate and relaxed conversations. Artwork is “Sitting Bull” by Nicholas Ward. RIGHT (bottom): The fireplace in the living area—made of stacked grey osage stone—was an essential part of the design, says architect Dana Ellis, because the family puts a high priority on the ritual of gathering and nothing encourages that more than a fire on a cold winter night. The artwork is “Buffalo Bill Cody” by Tomas Lasankys and most of the furnishings are from Cather’s Home in Basalt, Colorado.



WE HAVE THE PERFECT MOUNTAIN HOME FOR YOU

WHETHER IT'S BRAND NEW OR A COVETED RESALE.

Begin your legacy at this premier, four-season Alpine mountain community in the heart of the renowned Tamarack Resort.



VILLAGE AT TAMARACK | UNIT 202
2 BEDROOM / 2 BATH LUXURY CONDO • 1,384 SF • \$999,000



63 COUNCIL | THEATER, WINE CELLAR, PILOT'S QUARTERS
4 BEDROOMS / 8 BATH • 6,870 SF • \$2,267,100



1 ROCK CREEK | COTTAGE IN THE HEART OF TAMARACK
2 BEDROOM / 2.5 BATH • 1,250 SF • \$699,000



27 GOLDEN BENCH | TURNKEY TOWNHOME
3 BEDROOM / 3 BATH • 1,640 SF • \$679,900



SKI IN SKI OUT HOMESITES
PRICES STARTING AT \$250,000



29 GOLDEN BAR | SKI ACCESS TOWNHOME
2 BEDROOM / 3 BATH • 1,407 SF • \$625,000

Tamarack Realty is an exclusive full-service brokerage company located onsite at Tamarack Resort. Our friendly, knowledgeable sales associates will happily listen to both your dreams and your needs, and then help you find the perfect home to fulfill both—whether that's an Estate Home, Condominium, Townhome, Estate Lot, Cottage, or Chalet. Now offering The Village at Tamarack luxury residences starting in the mid \$500Ks.



CONTACT US TODAY

208.325.1055 | TamarackRealty.com

Trisha Sears, Broker - Trisha@TamarackRealty.com



Sun Valley

THE ORIGINAL MOUNTAIN TOWN



As a former Olympic ski racer well-versed in ski resorts around the world, I know how fortunate my family and I are to live in a place as special as Sun Valley. My home for 46 years, I can attest to Sun Valley's incredible sense of community and accompanying lifestyle, along with the unlimited recreational opportunities found in our five local mountain ranges.

I've practiced real estate in the Sun Valley area for more than 20 years and welcome the opportunity to share my love of this very special place—America's first winter resort, founded in 1936—with you.

TERRY PALMER

Sun Valley Associates REAL ESTATE BROKERAGE, PARTNER


mobile (208) 720-3401 • office (208) 622-4100 • tpalmer@svassociates.com

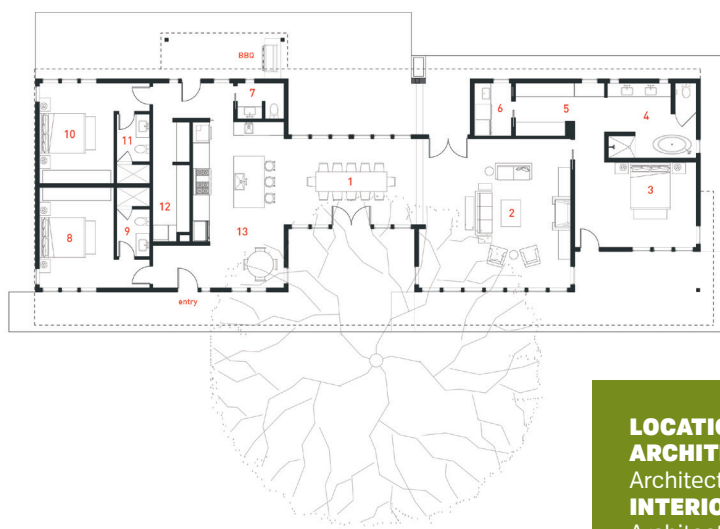


ABOVE: The master bedroom looks out towards the mountains and is simple and clean, blending natural elements with contemporary stylings. RIGHT: A guest room offers views, privacy, and peace. BELOW: The floor plan is open with a natural flow from space to space that reflects the way the family lives.

table, a piece that had been in the family."

At one point in the project, meeting the budget became a concern so, Ellis says, "We put the design on a diet. We went to the homeowners and considered square footage, and where we could conserve. The end result is a better design than the original. We had to be more intentional about dimensions and how the dimensions of a space reflected the way this family lives."

The effect is stunning. It's a home that encourages serenity and connections, everything you would want from a natural retreat. 



MAIN LEVEL

- 1 laundry
- 2 master closet
- 3 master bath
- 4 master bedroom
- 5 living room
- 6 dining room
- 7 kitchen
- 8 pantry
- 9 guest bath 1
- 10 guest suite 1
- 11 guest suite 2
- 12 guest bath 2
- 13 powder

LOCATION: Carbondale, Colorado
ARCHITECTURE: Rowland+Broughton Architecture / Urban Design / Interior Design
INTERIOR DESIGN: Rowland+Broughton Architecture / Urban Design / Interior Design
CONTRACTOR: Schlumberger Construction
SIZE: 2,700 sf • **COMPLETED:** August 2016